



2022 Schools Guide

Eugene
School
District 4J
Eugene, OR

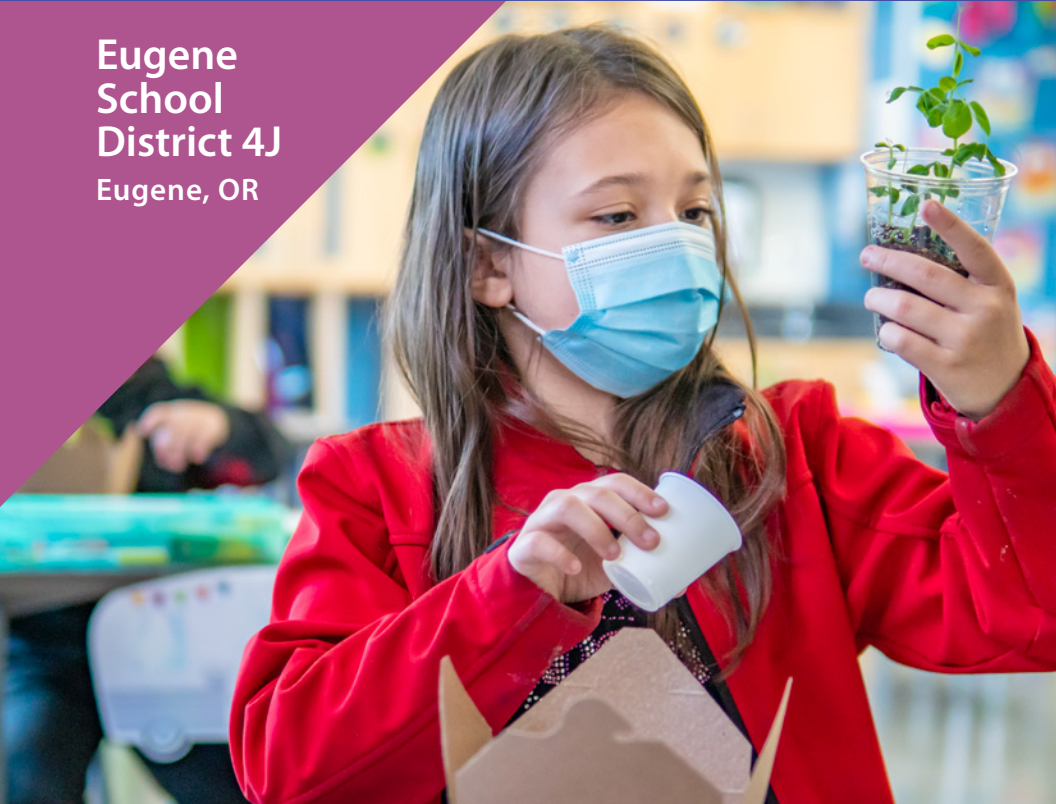


Table of Contents

Welcome

About 4J	1
----------------	---

General Information

Admission and enrollment.....	2
Kindergarten.....	2
Curriculum and instruction.....	2
Special needs and support programs.....	3
Alternative education	3
Assessment and standards.....	4
School profiles (aka report cards).....	4
Transportation	4
Child care	5
Student rights and responsibilities.....	5
District handbook.....	5

Choosing a School

School choice and interdistrict transfer.....	6
Choices and possibilities for 4J families.....	6
Neighborhood schools.....	7
Alternative schools.....	7
District residency and age requirements	7
Special education programs	7
A note about test results and choosing a school.....	7
Application process.....	8

School Descriptions

Elementary schools.....	9
Middle schools	30
High schools.....	42
Online academy	49
District map.....	50
Schools index.....	52



Eugene School District 4J

200 North Monroe Street, Eugene, OR 97402

phone 541-790-7700 fax 541-790-7711 www.4j.lane.edu

Welcome!

Introduction

Eugene School District 4J is proud of its history of excellence. That history is built on the work of outstanding students, creative teachers, dedicated staff members, involved parents and a supportive community, all working together to create a system of remarkable schools. Teaching and learning is, of course, the core of any school district, and 4J is pleased to offer parents an array of choices in education.

4J facts

Eugene School District 4J, formed in 1854, covers approximately 155 square miles in the southern Willamette Valley. About 85% of the city of Eugene lies inside 4J's boundaries, as do the city of Coburg and a small part of Linn County to the north. The other 15% of Eugene, in the northwest area of the city, is in the Bethel School District.

4J's long name is "Lane County School District Number 4J." The "4" means that it was the fourth school district incorporated in Lane County. The "J" means that it is a joint district, because it also covers a small part of Linn County.

The district serves roughly 16,000 students in 19 elementary schools, eight middle schools, four comprehensive high schools and a variety of alternative education programs.

The Education Center, 4J's administration building, is located at 200 N. Monroe Street, Eugene, OR 97402. The Eugene School Board (4j.lane.edu/board) meets regularly and encourages public input. Regular board meetings and work sessions are broadcast live on the district's radio station KRVM 1280 AM and 98.7 FM and streamed live online at 4j.lane.edu/stream.

4J philosophy

Eugene School District 4J believes strongly that all children deserve an excellent, well-rounded education. 4J employees—teachers, support staff and administrators—believe in the worth of public education and the difference caring people can make for students.

4J online

Website: 4j.lane.edu. 4J's website includes information about the district and its schools, current issues, school board policies and more. Each 4J school also has its own website for information specific to that school.

Facebook: facebook.com/4Jschools | **Instagram:** instagram.com/4Jschools

Twitter: News & Info: [@4Jschools](https://twitter.com/4Jschools) | Weather-related school closure alerts: [@4Jweather](https://twitter.com/4Jweather)

E-news: Key 4J updates about once or twice a month. Subscribe: tinyurl.com/4Jschoolnews

General Information

Admission and enrollment

Enrollment age: Children who are 5 years old by September 1 are eligible to attend school. If a child will turn 5 later in September and the parent believes they would qualify for and benefit from advanced grade placement, the parent may request early entry. For more information about early entry, visit 4j.lane.edu/kindergarten.

Find My School: To find your neighborhood school, confirm that your address is within the 4J boundary and learn more about enrolling your student, visit 4j.lane.edu/boundaries or call 541-790-7553.

District Residency: To enroll in a 4J school as a neighborhood resident or to participate in the school choice process as a district resident, a student must reside with a parent or guardian within the school or district boundary more than 50 percent of the time. At the time of registration, parents or guardians must present original documentation demonstrating their home address. For details, see 4j.lane.edu/instruction/enrollment/documents. All documents submitted must be acceptable to Eugene School District 4J. If, at any time, a student's residence is in question, the district may require additional evidence to verify the residence. If submitted documents are found to have been falsified, the student will immediately be sent to the school they should be attending.

Families who live outside of the district may request a transfer to 4J. If you do not live in 4J, or if you have moved from 4J to outside of the district boundary, your child must attend school in the district where you reside unless you receive a transfer. For more information about out-of-district transfers, visit 4j.lane.edu/outofdistricttransfers.

Unhoused Students: For school enrollment questions for students who are in shelters, vehicles, or temporary or transitional living situations, please call 541-790-4932.

Kindergarten

Kindergarten is the first public school grade, preceding first grade. Children who have turned 5 years of age by September 1 are eligible for and should attend kindergarten. Kindergarten is a full-day program at all 4J elementary schools.

All schools host visits during the school choice month, January. Visit 4j.lane.edu/choice for details.

4J elementary schools hold kindergarten welcome and registration events in February or March and ask parents to register their new kindergarten students early in the year.

For more information about kindergarten, visit 4j.lane.edu/kindergarten or request a copy of the 4J Kindergarten Handbook by calling 4J Communications, 541-790-7707.

Curriculum and instruction

4J schools are recognized for student achievement, innovation and strong community support. The established core values are excellence, equity and choice. 4J's Vision 20/20 strategic plan shapes the school district's direction and actions, and serves as a guide for all staff. 4J's Vision 20/20 goals are:

- Educational Excellence with Equitable Access and Outcomes for Every Student
- Multiple Pathways to Student Success
- Communication and Connection with Community
- Diverse World-Class Workforce
- Stable, Sustainable Stewardship

General Information

Special needs and support programs

4J is committed to providing a complete education for all students, regardless of what needs they may have. Programs and services for students with specific needs include:

Students for whom English is a second language:

English language development, 541-790-6872

Pre-school children with speech, language, behavioral or academic challenges or developmental delays:

Early childhood program, 541-790-6875

Students who need academic assistance in reading and math:

Title I program, 541-790-7578

Native American students who need academic assistance:

NATIVES program, 541-790-5900

Talented and gifted students:

TAG program, 541-790-7571

Students with disabilities: 4J's Student Services Department, 541-790-7800, provides support to students and schools through special instructional programs and support staff.

4J schools provide a free and appropriate educational program to students with disabilities, in accordance with state and federal guidelines, including Section 504 of the Rehabilitation Act of 1973 and the Individuals with Disabilities Education Act. The district and its teaching staff will make reasonable accommodations and modifications for any student who has a disability. Students or their parents may contact their classroom teacher, a counselor, the school principal or 4J's Student Services Department if they believe accommodations or modifications need to be made.

4J's Student Services Department partners with general education staff to provide high-quality instruction and access to the general education curriculum for students with disabilities. Some students with disabilities may participate fully in the regular educational program while others may require specialized settings.

The Oregon Department of Education issues an annual report indicating how the district has performed on targets set in the State Performance Plan (SPP) for Special Education. 4J's special education report card is available on the district's website at 4j.lane.edu/instruction/student-services/compliance.

Students, or parents of students, who believe they need special education accommodations or modifications may contact their teacher, a counselor, the principal or 4J's Student Services Department if they would like to be considered for an evaluation to receive special education services.

To learn more about any of these services or if you know of any child who might need special education, call 541-790-7800. For questions about Section 504 accommodations, speak with your school's 504 coordinator or call 541-790-7800.

Alternative Education

4J has partnerships with many local programs for students that provide alternatives to comprehensive high school. Placement comes through a recommendation from the student's original school and the 4J alternative education administrator. For more information, contact your neighborhood or attending 4J high school. This program is different from 4J's alternative elementary schools.

General Information

Assessment and standards

Students in Oregon take tests periodically throughout their school careers in order to assess their progress toward meeting state and district standards in various subject areas. For your student's test results, contact their school. The Oregon Department of Education publishes school and district profiles each year, at www.ode.state.or.us/data/reportcard. For more information about testing, visit 4j.lane.edu/instruction/assessment or call 541-790-7550.

School profiles (aka report cards)

Each year, the Oregon Department of Education issues an at-a-glance profile (previously called "report cards") for every public school and district in Oregon. The state's school profiles provide information on student demographics, performance on state tests, student outcomes, staff, educational programs, and how schools compare to others around the state. 4J schools perform well overall compared with state averages and with similar schools. However, opportunity and achievement gaps persist here and across the U.S. 4J schools are committed to helping all students succeed. To learn more, visit www.ode.state.or.us/data/reportcard.

Transportation

Neighborhood elementary and middle schools: Elementary and middle school students who attend their neighborhood schools and live 1 mile or farther from school for elementary students and 1.5 miles or farther from school for middle schoolers may ride 4J buses to and from school. Exceptions may be granted for students who live closer than the limits, but cannot safely walk to school. To learn more, contact 4J's Transportation Department at 541-790-7474 or visit 4j.lane.edu/transportation.

High schools: High school students are encouraged to walk, bike or ride a Lane Transit District bus to school. The district provides school bus services only for high school students who live farther than 1.5 miles from a LTD bus stop and for those who are assigned school bus services so they can participate in a special education program.

Public Transportation: Lane Transit District (LTD) provides free bus service to all K–12 students in Lane County. Bus passes are available from school offices using either the TouchPass mobile app or a tap card and are valid from September 1 of the current school year to September 30 of the following year. For more information, visit ltd.org/student-pass or call 541-687-5555.

School choice: Parents of students who have chosen to attend a 4J school other than their neighborhood school are responsible for providing transportation. However, these students may ride 4J buses on existing bus routes within the attendance area of the school they will be attending, if space is available.

Students with disabilities: Students with special needs will be provided transportation to the school assigned by their individualized education program or Section 504 team. When students with special needs choose to attend a school that is not their neighborhood school, the parents are responsible for providing transportation.

Transportation options: The Point2Point School Solutions program provides free assistance organizing walking groups, biking groups and carpools for K–12 students. To learn more, contact Point2Point at 541-682-6213 or visit ltd.org/p2p-for-schools.

General Information

Child care

Many 4J schools partner with local child care providers that offer a variety of before- and after-school programs, often onsite at the school. Call individual schools for information.

Student rights and responsibilities

4J publishes a Student Rights & Responsibilities Handbook that clearly outlines expectations and consequences for student behavior. This handbook is available at 4j.lane.edu/superintendent/srrh or by calling 4J Communications at 541-790-7707.

District handbook

Each year, 4J publishes a district handbook detailing many of the district's policies and procedures. The handbook is mailed to families before the start of school. Contact 4J Communications, 541-790-7707, to request a copy.

Choosing a School

Eugene School District 4J welcomes students from all attendance areas, both within and outside of the school district boundaries.

All 4J schools strive to maintain an innovative, high-quality educational environment. The state and the district have established educational objectives for students that every school must address. However, schools may differ in philosophy and how they meet their objectives.

No matter which school you enroll in, your child will receive an excellent education in Eugene School District 4J.

School choice and interdistrict transfer

Families who live in the 4J district may choose their school, provided there is an opening available, in accordance with the district's longstanding school choice policy. Most families choose to have their children attend their neighborhood schools, but parents have the option of requesting to enroll their children in another neighborhood school or one of the district's alternative schools.

Families who live outside the 4J district and wish to enroll in a 4J school may request an interdistrict transfer. Families will be asked to indicate which school(s) they are seeking to transfer into. Not all 4J schools are able to accept interdistrict transfer requests due to the high level of interest from 4J students. Once a student has been granted a transfer into a 4J school and released from their home district, they can enroll in the school.

Transfer requests will be granted in an order determined by lottery. Requests are accepted only for the coming year. There are no early waiting lists for any 4J school.

For more information, visit 4j.lane.edu/choice, email schoolchoice@4j.lane.edu, or call 541-790-7553.

Choices and possibilities for 4J families:

1. Enroll in your neighborhood school
2. Request to attend a different neighborhood school
3. Request to attend an alternative school

When choosing a school, parents should consider several things:

Transportation: School bus service generally is provided only for neighborhood schools, and bus routes travel only within a school's attendance boundary. School choice and transfer students may use existing bus services if space is available; otherwise families must provide their own transportation.

Time: What parental commitments are expected? All schools encourage active parent involvement. Some programs may expect heavy participation.

Style: How does the school operate? How does the school feel? How does the educational approach of the school match your child's needs?

Finally, investigate—check out your neighborhood school and any other school you are interested in. In 2022, you can explore your options through virtual school visits, talking to teachers and the principal, and so on. Ask yourself what you really want for your child. Make sure you understand the school's program.

Choosing a School

Neighborhood schools

Every residence in Eugene School District 4J is in the attendance area of a neighborhood elementary, middle and high school. Most families choose to have their children attend their neighborhood schools, which offers many advantages. You may also transfer to a different neighborhood school, if you feel it better meets your child's needs and there is space available. See page 8 for more information about the school choice process.

Each neighborhood school is unique, but all emphasize developing strong educational programs that reflect the needs and interests of children and families in their area. All 4J schools strive to constantly improve the overall educational experience, including student performance on measures of their learning such as state tests, exposure to specialist teachers, extracurricular activities, parent and community involvement, and other enriching educational experiences.

The principal at your neighborhood school can tell you more about the school's strengths and share the school's improvement goals for the year. We suggest you start by getting to know your neighborhood school during virtual school visitation events in January. For a schedule of events, visit 4j.lane.edu/choice or the school's website.

Alternative schools

4J alternative school programs build on a particular theme or approach to education. The district's alternative schools include language immersion programs in French, Spanish, Japanese and Mandarin Chinese and other approaches to K-12 education. Alternative schools have no attendance boundaries. Enrollment is through the school choice process and families from any 4J neighborhood may request to have their child attend an alternative school. Openings are filled in an order determined by lottery.

District residency and age requirements

A student must live with a parent or guardian within the Eugene School District 4J boundary before enrolling or applying for a transfer as a district resident. Proof of district residence is required (see page 2). Families who live outside of the district may apply for an interdistrict transfer to a 4J school in March (see page 8). For residency or boundary information, call 541-790-7553, email schoolchoice@4j.lane.edu, or visit 4j.lane.edu/enroll.

Children who will be at least 5 years of age by September 1 of the coming school year are eligible to attend kindergarten.

Special education programs

Parents of students with individualized education programs (IEPs) or Section 504 plans may apply to transfer to a school other than their neighborhood school or the school listed on the student's plan. If necessary, an IEP or Section 504 meeting may be convened to determine if the student's education plan can be implemented at the requested school. District special education programs (CLC, CLB and Life Skills) are filled only via action by a 4J Student Services administrator.

A note about test results and choosing a school

It's natural that with so many choices in 4J, parents will want some clue where to start. Many people look to test scores as a guide, but be warned: results can be misleading.

The Oregon state assessments measure the progress of individual students. Past students' results cannot predict future students' results; each child learns and tests differently. Additionally, some schools have more students moving in and out of their program than others. When some students have not been through a school's program to build and improve skills, this can drastically affect group scores.

Choosing a School

All 4J schools have school improvement goals that address the Oregon statewide assessments, and specific plans on how to help students improve their performance. See the school pages in this guide, visit the school websites, or contact the school for specific plans and information around testing.

Application process

Enroll in your neighborhood school: Students may enroll in their neighborhood school at any time. First, identify your neighborhood school. Then, call the school to learn about the enrollment process. To enroll, you must bring immunization records and documents that verify your and your student's identities and address. To learn more, visit 4j.lane.edu/enroll or call 541-790-7550.

—OR—

Request to enroll in a different school: To request a transfer to a different 4J neighborhood school or a 4J alternative school, or to request an interdistrict transfer into 4J, follow the process below. Charter schools, private schools and other school districts have their own enrollment procedures and are not included in the district's request process. Dates given below are for requests to enroll in fall 2022. Visit 4j.lane.edu/choice for school choice lottery updates and general information.

- **Select up to three schools.** To help develop a list of schools you are interested in, you can read the information in this Schools Guide and attend virtual school visitation events during the month of January. See 4j.lane.edu/choice for specific dates and times. You are encouraged to research school programs before making a choice, but you are not required to attend a virtual visit for your child to be accepted at that school.
- **Complete an application online:** The request form is online at 4j.lane.edu/choice. You may request up to three schools and must rank them in order of preference. Some 4J schools are not open to interdistrict transfer requests from non-resident students.
- **Transfer application period for district residents:** January 1–31, 2022.
- **Interdistrict transfer application period for non-district residents:** March 1–31, 2022.
- **Lotteries:** All requests received by the deadline are entered into the lottery that determines the order in which students are offered enrollment in a requested school and the order in which the remaining students are placed on that school's waiting list. Students who live within the 4J district have priority over non-district students. Certain groups of students, including returning students and co-enrolled siblings, have priority for any openings. Visit 4j.lane.edu/choice for more information about transfer enrollment priorities.
- **Notification and acceptance:** Families will be notified by email of lottery results and whether their student is offered enrollment at a requested school. Families must accept the opening within five days, or it will be offered to the next student on the waiting list.
- **Waiting list:** If a student is not offered a seat immediately after the lottery, families will be notified that their student is placed on a school's waiting list and in what position. A student's waiting list position may move lower or higher in number due to space availability, other students accepting or declining offers, and/or placement of later requests by students with a higher priority request.
- **Applying after the lottery deadlines:** Post-lottery requests will be accepted beginning on May 1, 2022, and may be accommodated if space is available; otherwise they will be placed on the school's waiting list by priority and in the order they are received.

To learn more about the application and lottery process, visit 4j.lane.edu/choice.

Elementary Schools

 Denotes an alternative school

Adams Elementary School

950 West 22nd Avenue, Eugene, OR 97405

541-790-5000 Fax: 541-790-5005

adams.4j.lane.edu

Principal: Natalie Oliver

Grades: K–5

Email: oliver_n@4j.lane.edu

Enrollment: 412

Middle School Region: Arts & Technology Academy, Roosevelt and Spencer Butte

High School Region: Churchill, South Eugene

Mission Statement: We are committed to providing all students with meaningful learning opportunities designed to help each individual achieve full academic and social potential.

Program Description: Adams is a thriving neighborhood school that emphasizes academic excellence, sustainability, citizenship and equity. Our talented and dedicated staff strives to provide differentiated instruction to challenge and support all students in achieving high levels of academic success, as well as social and emotional learning. Adams benefits from active parent and community involvement, offering students a variety of experiences including music, art, field trips, and participation in green school initiatives such as gardening, composting, and walking and biking to school.

School Highlights:

- Strong community-building activities promoting social/emotional learning through the Caring for Kids curriculum & Positive Behavior Intervention and Supports (PBIS)
- Counselor support for individuals; whole-class and grade-level supports
- Premier Green School status; developing a “Think Green” curriculum; working closely with Partnerships for Sustainable Schools, MECCA and BRING
- Field-based science curriculum including participation in Salmon Watch, West Eugene Wetlands, School Garden Project, Nearby Nature, Mt. Pisgah and Outdoor School
- Positive working relationship with students from the University of Oregon and a partnership with UO’s Environmental Leadership Program
- Digital literacy fostered through the use of technology including laptops, pro-scopes, clickers, audio recording equipment, digital and video cameras, and iPods and iPads
- Commitment to the arts and sciences providing students with Engineering Nights and Meet the Masters art program
- An outstanding library collection available to all students weekly; student participation in SMART reading program

School Improvement Goals:

- All students have access to a high-quality education with positive, encouraging and highly skilled educators
- Identify, challenge, eliminate and prevent racism; change structures, policies, practices and behaviors that perpetuate racism; and integrate cultural competency at all levels of the school and in all relationships within the school
- Increase student achievement in reading and math as measured by both formative and summative indicators of student learning
- Ongoing staff development in making student-thinking visible and increasing student engagement and challenge
- Responsible stewardship of our resources and our environment, including education about and adoption of sustainable practices
- Continue developing staff and students skills in technology as learning and communication tools, maximizing curiosity, organization and creativity

Awbrey Park Elementary School

158 Spring Creek Drive, Eugene, OR 97404
541-790-4050 Fax: 541-790-4055
awbreypark.4j.lane.edu

Principal: Mark Watson

Grades: K–5

Email: watson_m@4j.lane.edu

Enrollment: 441

Middle School Region: Madison

High School Region: North Eugene

Mission Statement: We strive to ensure that all students learn in a respectful, challenging and collaborative environment.

Program Description: Awbrey Park is a thriving neighborhood school in North Eugene that focuses on the whole child. We value parent involvement and collaboration. Our teachers, counselor, administrator and support staff excel in teamwork and a child-centered approach to elementary education. The Awbrey Park academic program focuses on 21st-century literacy, math, science and a hands-on, minds-on approach to learning. We are an AVID school that is preparing students for a successful future. The integration of technology is key to our scholarly and engaging classrooms. Our students know that our staff believe in them and can assist them to make academic and social gains in their progress through school.

School Highlights:

- We are an AVID school using high level questioning and reading strategies. We prepare all students for college and career readiness, and to be successful in a global society.
- We have a school counselor to support students and families.
- We integrate arts and science opportunities in grades K–5.
- We have a highly skilled and experienced schoolwide Title I team and support team who work together to help students academically and socially.
- We integrate technology in all grade levels. Staff use SMART Boards, tablets, laptops and mounted projectors in every classroom. Students use iPads for a majority of their day to enhance their learning.
- We have a schoolwide Positive Behavior Intervention and Supports program and an extensive bullying prevention curriculum. We also have a strong social and developmental skills program called Caring for Kids.
- Each month, we hold fun events to keep students, parents and staff involved in our school community, such as Hot Dogs & Hot Rods, an art show, movie nights, a carnival, Jog-A-Thon, Reading Night, and a Science, Technology, Engineering & Math Night.
- We know how to have fun! Our students work in fun, exhilarating classrooms that motivate them to love school.

School Improvement Goals:

- All teachers use instructional strategies and initiatives that are grounded in evidence-based practices.
- Instructional teams use a variety of data to assess strengths and weaknesses of the curriculum and instructional strategies and make necessary changes.
- Staff educate families and provide needed resources to support their children's learning.
- Staff actively promote a shared vision for equity, cultural competence and high expectations.
- All instructional staff in the school use sound classroom management practices that encourage student engagement and affect student learning.

Buena Vista Spanish Immersion Elementary School



1500 Queens Way, Eugene, OR 97401
541-790-6500 Fax: 541-790-6505
buenavista.4j.lane.edu

Principal: Stephanie Randall
Email: randall_st@4j.lane.edu

Grades: K–5
Enrollment: 452

K–12 Language Immersion Program: Students continue in the language immersion program at Monroe Middle School and through the Eugene International High School at Sheldon High School.

Mission Statement: Buena Vista’s Spanish immersion program is designed to provide students with a high-quality bilingual and biliterate education, building a foundation to achieve success from kindergarten through 12th grade and beyond.

Program Description: Research indicates bilingual students gain deeper insights into ways of thinking and expressing themselves. Learning two languages increases the strength of literacy in both. Skills acquired include:

- High level of proficiency in literacy in both English and Spanish
- Appreciation of multiple cultures and sensitivity to people who speak other languages, as well as a multicultural perspective
- Foundations of knowledge in the other curriculum areas, such as science and social studies
- Ability to make connections across subjects and languages
- Flexibility of thinking and creative problem solving

School Highlights: The Buena Vista Spanish Immersion program uses a 50/50 dual language immersion model where native English speakers and native Spanish speakers are integrated for instruction 100% of the day. With the dual language immersion model, half the content is taught in English and half is in Spanish. Teachers maintain a separation of English and Spanish for instruction. Skills taught in each language are carefully coordinated to maximize cross-linguistic transfer and support learning in all content areas. Buena Vista teachers use flexible grouping and differentiation to meet the needs of all students. Research confirms that a 50/50 model of instruction effectively achieves the goals of bilingualism and biliteracy. Students enrolled in the K–12 program will move on to Monroe Middle School and Sheldon High School to complete 13 years of language education.

- Commitment to literacy in two languages
- Commitment to excellent mathematics instruction and best practices
- Commitment to cultural awareness and proficiency
- Commitment to the arts and physical education
- Active parent involvement and outstanding parent organization

School Improvement Goal:

Continue to recruit, hire and retain highly qualified Spanish-speaking teachers and staff as needed in order to maintain a high level of commitment to the immersion experience for all students

Camas Ridge Community Elementary School

1150 East 29th Avenue, Eugene, OR 97403

Camas Ridge will be relocated to 2855 Lincoln Street during construction of the new school building in fall 2022. The school will move back to its original location and into a new state-of-the-art school building in fall 2024.

541-790-8800 Fax: 541-790-8805

camasridge.4j.lane.edu

Principal: Mike Riplinger

Email: riplinger_m@4j.lane.edu

Grades: K–5

Enrollment: 286

Middle School Region: Roosevelt and Spencer Butte

High School Region: South Eugene

Mission Statement: Wonder, Explore, Grow. Our mission is supported by a strong commitment to:

- Creative and scholarly project-based learning
- Multi-age academic and social development
- A caring learning community

Program Description: The morning is spent on language arts, math, social studies and science. Four days a week in grades 1–5 we have multi-age project-based classes in which students investigate open-ended questions and apply their knowledge to produce authentic products. Students choose from a menu of project-based learning classes. Project classes are engaging, scholarly and student-driven with an interdisciplinary approach that blends reading, writing, science, social studies and art with complex thinking skills in multi-week courses. During the year we also have two art block classes, which allow students to explore the elements of art, create their own original art, and critique and respond to art created by other students.

School Highlights:

- Parents, students and staff work together to create a dynamic, child-centered learning community.
- Every student is valued and is a contributing member of Camas Ridge Community School.
- Every student benefits from a rigorous, K–5 multi-disciplinary academic program that emphasizes multi-age, project-based learning and Common Core standards.
- Every student is inspired by and benefits from a safe, welcoming, respectful and inclusive school climate.
- An outstanding PE, music and arts program is available for all students.
- Students have access to a variety of after-school options.
- Technology is integrated into our program with wireless computer systems, SMART Boards, laptops and iPads.

School Improvement Goals:

- Every student will meet/exceed grade-level standards in reading, writing and math.
- Every student will develop the interpersonal skills necessary to succeed in a multi-age learning community.
- Every student will demonstrate the skills necessary to succeed in a variety of project-based learning courses.

Charlemagne French Immersion Elementary School



3875 Kincaid Street, Eugene, OR 97405
541-790-7080 Fax: 541-790-7085
charlemagne.4j.lane.edu

Principal: Tom Maloney
Email: maloney@4j.lane.edu

Grades: K–5
Enrollment: 337

K–12 Language Immersion Program: Students continue in the language immersion program at Roosevelt Middle School and through the Eugene International High School at South Eugene High School.

Mission Statement: We strive to support each student by creating a safe, structured and student-centered learning environment. This will be accomplished through differentiated instruction, culturally responsive practices and high levels of student engagement with a francophone focus.

Program Description: Our K–12 program is designed to empower every child to acquire the French and English academic and interpersonal skills necessary to become kind, empathetic, contributing members of society. We support students on their path to becoming global citizens. We expect our students to meet or exceed the State of Oregon’s grade-level standards in math, reading, writing and science, and to become fluent French speakers.

School Highlights:

- We create a learning environment that is inclusive, appreciative and respectful of our diverse community.
- We believe every student is an important member of our learning community.
- We know as a community we are more successful together.
- We model and support a growth mindset through which all individuals can learn and grow.
- We have an active and engaged community and a parent–teacher organization committed to the success of our school.

School Improvement Goals:

- 90% of all students will meet or exceed state benchmarks in English language arts, math and science
- 90% of all students will meet or exceed specific proficiency levels in French for the four language domains: speaking, writing, listening and reading
- Create a high-functioning schoolwide Positive Behavioral Interventions and Supports (PBIS) system
- Work together as a community to create a safe, respectful, culturally inclusive environment with consistent school rules and expectations

Chávez Elementary School

1510 West 14th Avenue, Eugene, OR 97402

541-790-5300 Fax: 541-790-5310

chavez.4j.lane.edu

Principal: Deirdre Pearson

Grades: K-5

Email: pearson_d@4j.lane.edu

Enrollment: 344

Middle School Region: Arts & Technology Academy

High School Region: Churchill

Mission Statement: To create a diverse student community of academically and socially skilled individuals by encouraging independence, respect and visionary thinking.

Program Description: The César E. Chávez Elementary School community believes a strong connection between parents, students and the school is the best way to promote student success. Chávez values parent involvement and collaboration. Our academic program focuses on literacy through systematic instruction. Our students have access to technology throughout their school day to enhance learning. Chávez is a respectful, caring community with high expectations. We honor individual successes and believe everyone can learn in an encouraging environment.

School Highlights:

- Schoolwide AVID Elementary School: AVID (Advancement Via Individual Determination) is a teaching and learning framework designed to help students develop the skills they need to be successful in college.
- Highly qualified staff engaged in ongoing professional development in literacy, mathematics and technology
- Positive school climate that supports the varied needs of all students
- 21st century technology integrated across curricular areas and grade levels K-5; 1:1 iPads for all students; SMART Boards in every classroom
- Involved community of families; bilingual (Spanish/English) communications: newsletters, website, monthly Chávez parent group meetings, other school communications; bilingual-bicultural school secretary and office assistant
- Family activities including Math Night, Literacy Night, Chávez Carnival and parent classes
- A variety of enrichment opportunities for students including SMART reading, Oregon Battle of the Books, talent show, BEST after-school program, CHAMPS mentoring program, student leadership, Green Team, artist-in-residence, school garden project, social-emotional learning curriculum, and BIPOC student affinity group
- Family supports including family resource coordinator, school social worker, clothes closet, food pantry, family care team, school wraparound services team, and many community partnerships to help meet basic needs of our families

School Improvement Goals:

- Improve student achievement in math
- Improve attendance
- Implement AVID schoolwide

Chinese Language Immersion Elementary School



2200 Bailey Hill Road, Eugene, OR 97405
541-790-5575 Fax: 541-790-5505
chinese-immersion.4j.lane.edu

Principal: Morgan Christensen
Email: christen_mo@4j.lane.edu

Grades: K–5
Enrollment: 115

K–12 Language Immersion Program: In 2022–23, the program will grow to K–6 with students continuing in the Chinese language immersion program at Kennedy Middle School and then Eugene International High School at Churchill High School. The program adds one grade level a year.

Mission Statement: The Chinese Language Immersion School provides a rigorous, supportive Mandarin immersion program that enables our students to become biliterate in Mandarin and English, providing students opportunities to develop strong cross-cultural understanding and appreciation for Chinese culture with the goal of becoming productive global citizens.

Program Description: Research indicates bilingual students gain deeper insights into ways of thinking and expressing themselves. Learning two languages increases the strength of literacy in both. Skills acquired include:

- High level of proficiency in literacy and math skills in both English and Mandarin
- Appreciation of multiple cultures, sensitivity to people who speak other languages and a multicultural perspective
- Foundations of knowledge in other curriculum areas, such as science and social studies
- Flexibility of thinking and creative problem solving

School Highlights:

- 50/50 model: Half of the school day is taught in Mandarin and the other half in English
- Science, math, Chinese language arts (reading, writing, speaking) in Mandarin and English language arts (reading, writing, speaking) in English
- Commitment to literacy in English and Mandarin languages
- Simplified Chinese characters taught
- Pinyin alphabet taught at 3rd grade
- Commitment to excellent mathematics instruction and best practices
- Commitment to cultural awareness and proficiency
- Commitment to the Chinese and American visual and performing arts
- Active parent involvement and outstanding parent organization
- Building students' appreciation of Chinese culture through community partnerships with the University of Oregon, the Chinese American Benevolent Association and more
- Participation in annual multi-cultural events such as Mid-Autumn Moon Festival, Chinese New Year, Asian Celebration and Dragon Boat Festival

School Improvement Goals:

- Students will demonstrate highly proficient biliteracy skills: speaking, writing and reading in Mandarin and English.
- Students will perform at or above grade level with peers on state, district and STAMP (standards-based measurement of proficiency) language tests.
- We will continue to recruit and hire highly qualified bilingual teachers.

Edgewood Community Elementary School

577 East 46th Avenue, Eugene, OR 97405
541-790-8700 Fax: 541-790-8705
edgewood.4j.lane.edu

Principal: Jim Moore
Email: moore_ji@4j.lane.edu

Grades: K-5
Enrollment: 406

Middle School Region: Spencer Butte

High School Region: South Eugene

Mission Statement: Edgewood Community Elementary School is dedicated to building a community of engaged, resilient, responsible life-long learners. We value respect, honor difference, and celebrate growth and effort.

Program Description: Principal, staff and community work together to create a safe, caring, respectful and culturally inclusive environment that encourages a growth mindset approach to learning. Edgewood offers a strong academic program that emphasizes effective effort with basic skills through an integrated curriculum approach. In a positive, caring environment, children are given responsibility for their behavior. We emphasize communication between home and school.

School Highlights:

- Variety of instructional approaches, techniques, strategies and enrichments form an integrated curriculum approach to meet the individual needs of each learner
- Focus on cultivating a growth mindset for learning and a culturally inclusive campus
- Schoolwide behavior support program helps create a safe, respectful school climate; Positive Behavior Intervention and Supports (PBIS) guides students to be safe, be kind and be responsible; social skills curriculum, problem-solving strategies, and behavior assistance for individualized needs
- Special activities include artist-in-residence, professional storyteller, 5th grade Outdoor School, schoolwide educational assemblies, and classroom and all-quad meetings
- After-school programs may include sewing class, knitting, chess club, OBOB (Oregon Battle of the Books), art class, Coyote Kids Whole Earth Nature School, Treetop Science classes, and YMCA Child Care
- Parent involvement and open communication between home and school are valued

School Improvement Goals:

- Increase student achievement in reading and math as measured by both formative and summative assessments
- Integrate cultural competency at all levels of the school and into all relationships within the school.
- Continue to create a safe, respectful and inclusive environment for students and families
- All teachers use instructional strategies and initiatives that are grounded in evidence-based practices

Edison Elementary School

2855 Lincoln Street, Eugene, OR 97405

Edison will move back to its original location, 1328 East 22nd Avenue, and into a new state-of-the-art school building in fall 2022.

541-790-8900 Fax: 541-790-8905

edison.4j.lane.edu

Principal: Scott Marsh
Email: marsh@4j.lane.edu

Grades: K–5
Enrollment: 318

Middle School Region: Roosevelt

High School Region: South Eugene

Mission Statement: Our mission is to provide an educational experience that prepares all students to be competent, compassionate, contributing members of the Edison community and inspired global citizens.

Program Description: Edison is a welcoming place for children and families. We have a strong community of learners and supporters! We place emphasis on children taking active responsibility for their learning, and staff and parents taking responsibility to support their learning. In addition, teachers teach a challenging, comprehensive curriculum while fostering an environment where mutual respect, exploration and risk-taking are encouraged.

School Highlights:

- Exceptional instruction combined with strong core academic programs utilizing Advancement Via Individual Determination (AVID) strategies and integrated curriculums in math, language arts, sciences, physical education, art and music, focusing on differentiated instructional practices
- Experienced and dedicated staff, highly involved parents and other community members all working together to support each student’s academic and interpersonal growth
- Marine science experience integrated throughout K-5 Edison experience
- Family nights, curriculum nights, Winter Sing and other functions—such as a strong social/emotional learning component that includes morning meetings—which foster a strong school and community connection
- Numerous after-school enrichment classes and on-site child care until 6 p.m.

School Improvement Goals:

- Students will meet or exceed grade level standards in reading, writing, math and science.
- Students, staff and parents will work together to maintain a safe, caring learning environment that fosters academic excellence and positive interpersonal relationships.
- Students will actively contribute to a schoolwide culture of respect, cooperation, inclusion, compassion and integrity.

Family School



1155 Crest Drive, Eugene, OR 97405
541-790-3700 Fax: 541-790-3705
family.4j.lane.edu

Principal: Teresa Martindale
Email: martindale_t@4j.lane.edu

Grades: K–5
Enrollment: 111

Mission Statement: Family School's motto, "From Roots to Wings," expresses our instructional focus of providing strong foundational skills and nurturing students' independence and lifelong learning and growth.

Program Description: Family School's model embraces child-centered learning where families, students and teachers work together as a collaborative team for the success of each child. Our multi-grade classrooms support the wide range of skills and abilities in a blended classroom, and nurtures the whole child through peer modeling and cooperation. All students receive language arts and math group instruction at their rate and level of learning. We build important relationships, promote social, emotional and physical safety, and combine them with high-interest learning. This creates confident learners and academic achievement. Academics with a strong sense of family-centered community allows for innovative approaches to instruction. Our partnerships and blended approach makes us an alternative in the most positive sense.

School Highlights:

- Strong academics: Emphasis on literature-based language arts, hands-on math, science and social studies integrated with multicultural themes
- Explore Enrichment: Multi-age, choice-based enrichment classes blending grades 1–5 in visual and performing arts, science, handcrafts, 3D design and coding, and other high-interest activities
- Outdoor School, Twice: Students attend this 3-day, 2-night outdoor education experience at the end of both 4th and 5th grades!
- Peer mediation program: Students apply for, train, and work in teams to problem-solve with their peers on the playground and other settings at school
- STEAM instruction: 3D design and printing, augmented reality-enhanced learning, block coding, modular robotics, engineering and construction, multi-medium art, and creative mathematics
- Title 1 school: Providing supplemental academic support for individuals in small group settings or one-on-one when needed
- Beautiful country setting: Our educators maximize the use of outdoor spaces during mealtimes and for play.

School Improvement Goals:

- Maintain high academic achievement for all students in all academic areas, while staying true to a developmental model
- Infuse our ROOTS values, Responsibility, Openness, Observance, Thoughtfulness and Safety into all school settings
- Learn from each other, and treat each other with respect and integrity

Gilham Elementary School

3307 Honeywood Street, Eugene, OR 97408

541-790-6200 Fax: 541-790-6205

gilham.4j.lane.edu

Principal: Lavinia Page

Grades: K–5

Email: page_l@4j.lane.edu

Enrollment: 585

Middle School Region: Cal Young

High School Region: Sheldon

Mission Statement: “Building on the past, creating the future.” We are here to foster a love of learning and excellence by helping students recognize their own value and potential, both academically and socially.

Program Description: We offer an atmosphere of high academic standards and community involvement, providing an enthusiastic and progressive educational environment. Parents and staff partner to encourage success and take pride in academic excellence. In addition to strong core programs, we also include technology, library, music, PE and schoolwide recycling. Parents are a vital part of our success and spend extensive hours volunteering. We value a curriculum that is relevant, engaging, culturally diverse and child-centered. We value an environment that is emotionally and physically safe, supportive of home, school and community relationships, where learning is authentic and connected, and where each child feels valued, worthy and invested.

School Highlights:

- Construction of 4 new classrooms and an auxiliary gym will be completed in fall 2022
- A STEAM lab (science, technology, engineering, art and mathematics) and a community room
- 1-to-1 iPad technology for each student, interactive SMART Boards, and an increasing focus on the use of technology to enhance learning and organize student portfolios
- After-school enrichment programs, including violin, chemistry, math, art, golf, tennis and yoga
- Student HOUSES (grades K–5) in support of community, shared accountability and restorative practices
- Participant in the Caring School Communities program, with every classroom holding daily morning meetings to check in and frame the day for students
- Artist and music residencies, as well as an annual community carnival and many family-focused events
- Onsite YMCA program offering after-school care

School Improvement Goals:

- Rigor and excellence: We will continue to maintain our high standards for academic learning and growth, and support students in meeting their goals. We will do this by analyzing our data, examining best practices for instruction, and capitalizing on the expertise and leadership of our exceptional staff.
- Achievement for all: We are focused on ensuring that each and every Gilham student has the tools and the support needed to meet and exceed their individual academic, social and emotional goals.
- STEAM: Ongoing development of a comprehensive, integrative STEAM (science, technology, engineering, arts and math) program, including robotics, maker projects, and design-to-implementation learning through program coding.

Holt Elementary School

770 Calvin Street, Eugene, OR 97401

541-790-6100 Fax: 541-790-6141

holt.4j.lane.edu

Principal: Allan Chinn

Grades: K-5

Email: chinn@4j.lane.edu

Enrollment: 474

Middle School Region: Monroe

High School Region: Sheldon

Mission Statement: We are committed to cultivating and empowering confident and resilient lifelong learners who experience academic, social and emotional success. We will do this by educating the whole child in a safe environment where diversity and individuality are nurtured and honored.

Program Description: We are inspired by the vision of our namesake, Bertha Holt, the founder of Holt International Adoption Agency. Our school's program is designed to embody her legacy of care for children from all backgrounds and abilities. Holt is a true community of teachers, students, parents, staff and volunteers working together to help students achieve academically.

School Highlights:

- Our beautiful, well-stocked library is staffed and available to students and families before and after school, as well as during weekly class times. Additionally, students participate in the SMART Reading Program
- A full-time counselor and on-site therapists, plus full-year Music & PE classes
- Students are carefully taught common school expectations and procedures in our Positive Behavior Intervention and Support program (PBIS).
- Holt has a large number of community and family volunteers. Our volunteers staff our library, read regularly with students, provide enrichment activities, and work with our active parent group PAHS (Parents at Holt School).
- Recognized as a Certified Green School, Holt boasts a beautiful school garden along with multiple energy saving features and works closely with the School Gardens Project.
- Throughout the school year, students engage in schoolwide enrichment and community building activities that vary from year-to-year in response to student and family input. These include a Student Council, OBOB (Oregon Battle of the Books), Artist-in-Residence, BEST After-School Program, and School Spirit Days.
- After-school childcare is available on-site through the YMCA program.

School Improvement Goals:

- The school's principal and staff will work together to create a safe, respectful, culturally inclusive environment with consistent school rules and expectations.
- Instructional teams will use a variety of data to assess strengths and weaknesses of the curriculum and instructional strategies and make necessary changes.
- The school's key documents will be annually reviewed for revision and disseminated to all families in the school and translated as needed.
- School leadership will facilitate an annual needs assessment based on student achievement and the key areas of effectiveness.
- All instructional staff at the school will be engaged in aligning instruction and local assessments to state standards.

Howard Elementary School

700 Howard Avenue, Eugene, OR 97404

541-790-4900 Fax: 541-790-4905

howard.4j.lane.edu

Principal: Erin Gaston

Grades: K–5

Email: gaston_e@4j.lane.edu

Enrollment: 495

Middle School Region: Kelly

High School Region: North Eugene

Mission Statement: Staff, students, and families encourage the joy of learning, the value of cooperative accomplishment, and the optimism of future success. Our goal is every student achieving high academic standards while becoming lifelong learners able to contribute to our local and global communities.

Program Description: Howard Elementary School is a wonderful neighborhood school that welcomes and celebrates all students. We offer a rigorous curriculum that challenges students and prepares them with 21st century skills. With the caring guidance of dedicated staff, students make academic gains while developing persistence and personal responsibility, qualities that are the cornerstone of lifelong learning. We are committed to fostering a curiosity for learning and the skills necessary to prepare academically and socially for middle school. Rigorous academic explorations coupled with the immersion of technology into everyday teaching and learning helps students grow into future thinkers and problem solvers.

School Highlights:

- We provide targeted small-group instruction in the areas of math and reading with the support of Title I, special education and ELD specialists, as well as focusing on the needs of our Talented and Gifted (TAG) students, providing instruction at students' level and rate of learning every day in the classroom and across the curriculum.
- A full-time counselor, full-time Student Success Coordinator, a Family Services Coordinator, plus full-year music & PE classes help us educate the whole child.
- Grade 4–5 enjoy an after-school strings program two days per week in partnership with the Eugene-Springfield Youth Symphony Orchestras.
- A robust after-school program that emphasizes academic instruction under the guidance of a certified teacher, daily enrichment activities led by passionate and dedicated adults, field trips and visits by guest teachers, and a healthy meal.
- Opened a brand new state-of-the-art building in fall 2016. The school features energy efficiencies such as rainwater collection, solar energy production and utilization of natural light. The school design includes two courtyards, a school garden area, turf and natural grass play fields, a family resource center space and improved school security.

School Improvement Goal:

- Each student will meet their growth targets in English language arts and math.
- Each student will develop the social, emotional, and behavioral skills needed to be successful learners.

McCornack Elementary School

1968 Brittany Street, Eugene, OR 97405

541-790-5800 Fax: 541-790-5805

mccornack.4j.lane.edu

Principal: Dana Brummett

Grades: K–5

Email: brummett_d@4j.lane.edu

Enrollment: 333

Middle School Region: Kennedy

High School Region: Churchill

Mission Statement: McCornack Elementary School maintains a collaborative culture of academic achievement in a student-centered learning environment. We value diversity, civic responsibility and the individual needs of all students to learn in our safe and supportive school. Our students will leave possessing the skills necessary to be healthy, productive and adaptive citizens of our country and our world.

Program Description: McCornack’s teaching staff is committed to helping students develop to their highest potential and meet the challenges of a diverse and ever-changing world. Strong academic skills are emphasized, including effective communication skills, problem solving, cooperative work habits and a sense of social responsibility. The collaboration between school staff, parents, community volunteers and organizations allows for rich, varied programs.

School Highlights:

- AVID (Achievement Via Individual Determination) school, Caring Schools Community Program includes Positive Behavior Support, Second Steps character development curriculum, Big & Little Buddies, community service and class meetings
- Student leadership opportunities include Dignity Creed student leadership team, McC TV, school store, spring musical, student-run composting and recycling programs, peer mediation, class buddies, Oregon Battle of the Books and more
- Diverse offerings include technology, school counseling, physical education, music instruction, choir and a musical strings program
- Enrichment opportunities include science clubs such as Coyote Kids, SMART reading program, gardening club, McC TV, Title I reading and math, BEST after-school program and onsite YMCA after-school childcare
- Strong parent and community volunteer program

School Improvement Goals:

- Raise student achievement in math, reading/literature and writing
- Continue to maintain a safe, inclusive and productive learning environment
- Continue to maintain strong community connections

River Road/El Camino del Río Elementary School

120 West Hilliard Lane, Eugene, OR 97404
541-790-7200 Fax: 541-790-7205
riverroad.4j.lane.edu

Principal: Karen Ramirez Gutierrez
Email: ramirezgutierrez_k@4j.lane.edu

Grades: K–5
Enrollment: 383

K–12 Dual Language Immersion Program: Continues at Kelly Middle School and North Eugene High School

Mission Statement: Students in the River Road/El Camino del Río dual language program will be bilingual, biliterate and multicultural. Students will exhibit high academic achievement in all content areas in both languages.

Program Description: River Road/El Camino del Río is a two-way immersion program that offers a unique opportunity for native English and Spanish speakers to learn together in order to become bilingual and biliterate. They quickly become emerging bilinguals and establish strong cross-cultural relationships. The program is an outstanding opportunity for English language learners, as well as for students who wish to learn Spanish. Students enrolled in the K–12 program will move on to Kelly and North Eugene to complete 13 years of language education.

Students learn to read in Spanish and English simultaneously. The immersion model is a 50/50 dual language program, meaning that half the content is taught in English and half is in Spanish. Teachers are highly trained in a variety of strategies to help children learn language, reading, math and other content areas.

School Highlights:

- We are a culturally rich and diverse community highly involved in student learning.
- We have a K–5th grade Baile Folklorico dancing group that learns and performs dances from Latin America.
- River Road/El Camino del Río has a highly involved bilingual parent group.
- BEST, an after-school academic support program, offers an hour of extended instruction in reading and math.
- A thriving after-school marimba program is offered to students interested in performing at high levels around the community.
- Strings is offered to students in grades 3–5.
- We offer at least one family enrichment/cultural event for the whole community each semester.
- We have a beautiful and producing school garden that parents and kids help cultivate.
- We have one-to-one technology to support literacy, language instruction, mathematics and presenting skills.
- Our brand new state-of-the-art school building opened in fall 2017.

School Improvement Goals:

- Bilingualism and biliteracy: Students will develop a high level of oral and written proficiency in both Spanish and English.
- Academic excellence: Students will achieve academic excellence in all subject areas, meeting or exceeding district and state performance standards.
- Cross-cultural understanding and development of pro-social skills: Students will develop positive attitudes toward other languages and cultures and demonstrate their ability to appreciate the traditions and values of various cultures in our society and around the world.

Spring Creek Elementary School

560 Irvington Drive, Eugene, OR 97404

541-790-4870 Fax: 541-790-4880

springcreek.4j.lane.edu

Principal: Sebastian Bolden

Grades: K–5

Email: bolden_s@4j.lane.edu

Enrollment: 306

Middle School Region: Madison

High School Region: North Eugene

Mission Statement: We strive to develop the social, emotional and cultural aspects of the whole child, while celebrating academic success and providing a comprehensive education for all students.

Program Description: At Spring Creek Elementary, students are engaged in meaningful learning experiences every day that are enhanced by relationships with caring adults. We offer a robust instructional program where we integrate best instructional practices into the core academic subjects of language arts, mathematics, science and fine arts. We also believe that school must be a place of joy and celebration where students have a real sense of belonging and possibility. Spring Creek is committed to cultivating critical thinkers who have the 21st century skills necessary to become lifelong learners who are confident, curious, and compassionate members of society.

School Highlights:

- A comprehensive academic, social and emotional program supporting the growth and development of the whole child.
- Spring Creek is an AVID (Advancement Via Individual Determination) school with an emphasis on growing reading, writing, critical thinking, collaboration and organization skills with the goal of preparing students for college and career success.
- Strong community partnerships provide additional learning opportunities and experiences for students, including Lane Arts Council, City of Eugene, YMCA, Young Rembrandts, and Lane ESD-Deaf and Hard of Hearing program with after-school American Sign Language Club.
- Schoolwide Culturally Responsive Positive Behavioral Interventions and Supports (CRPBIS) program creates a safe, respectful, responsible and inclusive environment that enhances academic and social behavior.
- On-site after-school care offered by the YMCA.

School Improvement Goals:

- Align and implement schoolwide AVID instructional practices for Writing to Learn, Inquiry, Collaboration, Organization, Reading to Learn (WICOR) and Learning to Write, Learning to Inquire, Learning to Collaborate, Learning to Organize and Learning to Read (L-WICOR)
- Develop and implement a clear formalized system to communicate with stakeholders and increase engagement in our school community
- Improve data informed decision-making (and/or system) for reading instruction

Twin Oaks Elementary School

85916 Bailey Hill Road, Eugene, OR 97405

541-790-3417 Fax: 541-790-3305

twinoaks.4j.lane.edu

Principal: Denisa Taylor

Grades: K–5

Email: taylor_d@4j.lane.edu

Enrollment: 210

Middle School Region: Kennedy

High School Region: Churchill

Mission Statement: Students at Twin Oaks value family, school and community. Our primary focus is helping all students develop skills to promote success in our global world.

Program Description: The goal of Twin Oaks is to maintain a welcoming, safe and interesting learning environment where students are motivated and achieve at high levels. Twin Oaks has a strong academics-focused program.

School Highlights:

- Exceptional core academic programs utilizing differentiated instruction strategies to meet the needs of all students
- Highly skilled staff committed to working with students and parents to meet district and state standards
- Integration of technology into all areas, utilizing document cameras, SMART Boards, and iPads for every student
- Use of the Caring for Kids curriculum to support social emotional learning
- Robust schoolwide Positive Behavior Intervention and Supports (PBIS) program to support a positive school culture

School Improvement Goals:

- Continue to increase achievement for all students in math, reading and writing
- Work together as students, parents and staff to maintain a safe and productive learning environment
- Increase parental involvement in school and community activities

Willagillespie Elementary School

1125 Willagillespie Road, Eugene, OR 97401
541-790-7100 Fax: 541-790-7105
willagillespie.4j.lane.edu

Principal: Sheila Minney
Email: minney_sh@4j.lane.edu

Grades: K–5
Enrollment: 462

Middle School Region: Cal Young and Monroe

High School Region: Sheldon

Mission Statement: To provide a safe, caring environment that encourages all students to achieve their highest potential through challenging curriculum, enrichment opportunities and community collaboration.

Vision Statement: Equipping children to welcome the future and reach for their dreams.

Values We Encompass: Students first, innovation, rigorous expectations and a safe, nurturing environment.

Program Description: Willagillespie is a both a neighborhood and a targeted Title I school. We are staffed by a dedicated and hard-working team of teachers, educational assistants and specialists. We set high expectations for ourselves and for our students. We aim for a comprehensive educational program that spans grade levels and is offered throughout the school year. Children learn in a safe, encouraging and caring environment.

School Highlights:

- Community school with active parent–teacher organization, and strong parent and community volunteer presence
- On-site before- and after-school child care
- Before-school orchestra for grades 3-5
- “Brain friendly” classrooms and cutting-edge technology including iPads, document cameras and classroom computer carts at each grade level

School Improvement Goals:

In addition to annual growth in reading, mathematics and writing, our school staff is committed to developing practices that align with the following goals:

- The school principal and staff will work together to create a safe, respectful and culturally inclusive environment with consistent school rules and expectations.
- All instructional staff at the school collaboratively plan for sound instruction in a variety of instructional modes.
- School staff create and maintain a welcoming environment for all families and community members.
- All instructional staff at the school engage in aligning instruction to state standards.

Yujin Gakuen Japanese Immersion Elementary School



850 Howard Avenue, Eugene, OR 97404

541-790-4606 Fax: 541-790-4610

yg.4j.lane.edu

Principal: Tom Piowaty

Grades: K–5

Email: piowaty_t@4j.lane.edu

Enrollment: 272

K–12 Language Immersion Program: Yujin Gakuen is a Japanese immersion school for grades K–5. Students continue in the program at Kelly Middle School for grades 6–8 and North Eugene High School for grades 9–12.

Mission Statement: Prepare students, through a bilingual, bicultural, integrated curriculum, to be responsible citizens in an increasingly global and technological society.

Program Description: Yujin Gakuen Japanese Immersion School was the first public Japanese immersion school in the nation. Roughly translated from Japanese, Yujin Gakuen means “happy garden of learning.” Students are taught in Japanese 50% of the day and in English for the other 50%.

School Highlights:

- Students learn Japanese from native Japanese-speaking teachers, interns from Japanese universities and Japanese-speaking volunteers.
- Students learn in four “languages:” Japanese, English, music and technology.
- Technology is integrated throughout the program, with wireless internet available in classrooms, document cameras and projectors in all rooms, and class sets of iPads and laptops available for classes.
- Students present projects, plays and presentations to peers at Yujin Gakuen and sister schools in Japan, as well as at numerous school and community events, including the annual Asian Celebration.
- Music is a major component of the Yujin Gakuen program, not only for teaching Japanese language acquisition, but for teaching a love of music. Students sing, dance, and perform Taiko drums and class plays to peers and families at Yujin Gakuen and to the public at community events.

School Improvement Goals:

- Academic: Increase student achievement in writing
- School climate: Continue to foster a safe, welcoming school environment for students, families and staff

Notes

Middle Schools

a Denotes an alternative school

Arts & Technology Academy

1650 West 22nd Avenue, Eugene, OR 97405

541-790-5700 Fax: 541-790-5705

ata.4j.lane.edu

Principal: AJ Hruby

Grades: 6–8

Email: hruby@4j.lane.edu

Enrollment: 427

Feeder Elementaries: Adams, Chávez

High School Region: Churchill

Mission Statement: To inspire, challenge, and equip our community of students with the knowledge and skills required to reach their full potential.

Program Description: Arts & Technology Academy is a neighborhood middle school that integrates Science, Technology, Engineering, Math and the Arts (STEAM). Students participate in scientific inquiry and project-based learning in all content areas using the design process. Teachers integrate reading, writing, mathematics and science curriculum to support problem-solving and critical-thinking skills in learning about real world challenges. Our students participate in a wide array of electives that allow them to apply the concepts they are learning in their core classes. Students' experiences result in strong academic growth during their middle school years, preparing them for high school success and the STEM courses at Churchill High School.

School Highlights:

- Arts & Technology Academy opened its new state-of-the-art school building in fall 2017.
- We are an inclusive student-centered learning community that focuses on equity and multiculturalism.
- STEM electives vary, including computer science and programming, design and modeling, automation and robotics, and robotics/rockets/renewable energy, to provide students with opportunities to explore STEM fields and build 21st century skills.
- Our performing and visual arts program includes symphonic, jazz and beginning bands, choir, drama, global art and digital photography.
- We are an AVID school committed to preparing students for college and career options.
- We monitor student academic progress and, if necessary, provide targeted instruction and interventions through math and language arts support classes, along with acceleration through multi-age math instruction.
- We are partners with the University of Oregon STEM CORE, currently participating in National Science Foundation (NSF) grants with UO science professors.

School Improvement Goals:

- Address Common Core State Standards and Next Generation Science Standards through a variety of rigorous and innovative curriculum structures that are consistent with best practice.
- Incorporate community, families and local organizations to participate in the learning community.
- Ensure that all students meet or exceed grade-level benchmarks in reading and math.
- Ensure effective use and access to technology for all students across the curriculum.

Cal Young Middle School

2555 Gilham Road, Eugene, OR 97408
541-790-6400 Fax: 541-790-6456
calyoung.4j.lane.edu

Principal: Chris Mitchell
Email: mitchell_c@4j.lane.edu

Grades: 6–8
Enrollment: 482

Feeder Elementaries: Gilham, Willagillespie

High School Region: Sheldon

Mission Statement: Cal Young Middle School prepares all students to be lifelong learners in a caring and supportive environment.

Program Description: Cal Young Middle School provides an active, comprehensive instructional program designed to prepare students to succeed in high school and to meet or exceed state standards. In our state-of-the-art facility, students receive sequential instruction in music, fine arts, world languages and other elective courses that pique student interest and meet the developmental needs of middle-level students. Students at Cal Young access their own iPads through a 1-to-1 technology program. The use of technology and 21st century skills has become a primary focus at Cal Young with the support of community involvement and stakeholder input. Our staff and faculty are proud to offer 4J students access not only to these physical resources, but even more pleased to offer exceptional instruction in all content areas on how to use these devices productively and meaningfully to enhance their individual educational growth. Our commitment to preparing your children for today's needs can be actively observed every day in each of our classrooms and through strategic professional development and focused collaboration by the Cal Young faculty. Cal Young provides a positive, caring, supportive learning environment for all students, emphasizing academic excellence, respect and responsibility.

School Highlights:

- Cal Young's state-of-the-art school building, which opened in 2006, features natural light, open spaces and built-in instructional technology.
- All students receive their own individual iPads to facilitate a more personalized learning environment that promotes 21st-century learning skills.
- 21st century technology is integrated while emphasizing reading, writing, math, science and social studies.
- The Positive Behavior Intervention and Support program is designed to foster a positive school environment emphasizing respect, cooperation and academic excellence.
- The Middle School Mentor Program provides support for Cal Young students by pairing students with adult mentors who meet weekly for lunch and games.
- AVID, Advancement Via Individual Determination, an elective college-readiness program for 7–8 grade students, is designed to increase the number of students who enroll in four-year colleges and succeed in higher education.

School Improvement Goals:

- Increase achievement levels for every student in math, reading, writing and science.
- Provide a safe and healthy environment that supports learning and ensures that all students and staff are valued.
- Expand our communication and collaboration with the community.
- Foster a welcoming environment that promotes parental involvement.

Kelly Middle School

850 Howard Avenue, Eugene, OR 97404

541-790-4740 Fax: 541-790-4746

kelly.4j.lane.edu

Principal: John Wayland

Grades: 6–8

Email: wayland_j@4j.lane.edu

Enrollment: 429

Feeder Elementaries: Howard, River Road/El Camino del Río and Yujin Gakuen

High School Region: North Eugene

Mission Statement: The mission of Kelly Middle School is to create an inclusive learning environment that challenges, prepares and empowers students to be contributing and compassionate citizens of the world through our PILOTS framework: Persevere, Imagine, Learn, Own, Teams, Support. As PILOTS we will risk hope, honestly communicate, and engage in collaborative, civil and reflective processes in order to sustain safe, supportive learning environments. We will teach our students the thinking skills and learning habits needed today throughout our circles of community.

Program Description: We are committed to fostering lifelong learners who are prepared academically and socially for the transition to high school following the completion of three years of study at Kelly Middle School. Engaging academic explorations tempered with socially responsible instructional practices help students become contributors in our democratic society. Every Kelly student benefits from the leadership of all adults in the building, each of whom adhere to our Essential Commitment shown above in our mission statement.

School Highlights:

- Our teachers pride themselves on building strong relationships with students to build on students' strengths and to encourage the development of new skills and abilities. Our staff uses restorative practices to support the development of sensible and sustainable student behaviors that honor and respect both the individual and the group. We endeavor to address any situation as a growth and learning opportunity for the individual and our collective communities.
- We are the home of two innovative and progressive language immersion programs: Japanese and Spanish. See pages 40-41.
- Special programs available to all students include BEST after-school enrichment, homework club, orchestra, AVID, Ganas, WEB Leaders and other opportunities for students to gain understanding of the world by participating in schoolwide projects focusing on social justice and cultural proficiency through our daily Advisory program.

School Improvement Goals:

- We are committed to an active, engaged learning community.
- We develop and maintain structures and strategies for effective, focused and direct communication.
- We are committed to professional development and are continually assessing and addressing the needs of our students, families, staff and community members.
- We will provide a schedule that promotes academic achievement and physical and social development for every student.
- We strive to increase collaboration with students, families, staff and community.

Kennedy Middle School

2200 Bailey Hill Road, Eugene, OR 97405

541-790-5500 Fax: 541-790-5505

kennedy.4j.lane.edu

Principal: Morgan Christensen

Email: christen_mo@4j.lane.edu

Grades: 6–8

Enrollment: 344

Feeder Elementaries: McCornack, Twin Oaks and Chinese Immersion

High School Region: Churchill

Mission Statement: Our school vision is “Excellence Every Day for Every Knight.” To achieve this, Kennedy Middle School will strengthen a caring community of learners by:

- Promoting creative, social and intellectual growth
- Cultivating independent lifelong learners
- Celebrating diversity through inclusion and equity

Program Description: Kennedy’s program promotes community outreach and involvement for students, preparing them for a world beyond the school walls. Students become involved in serving others through an active student leadership program and activities such as canned food drives. Specialized programs and activities that develop students’ unique talents and interests are available through the music program, yearbook publication, student clubs, student leadership, AVID, and track & field. Recognition for student achievement and success occurs through the PRIDE Program, Knights of Honor and multicultural awards.

School Highlights:

- Recognizing excellence and effort: PRIDE Program, Student Leadership Pride, Multicultural Awards, Grade Level Awards and Kennedy Knights of Honor
- Celebrating diversity: Latino Family Nights and the Martin Luther King Jr. Assembly
- Leadership programs: Student Leadership, Band, AVID, WEB
- Strong academic support programs: reading and math intervention/support programs, learning center, homework assistance, social support groups, mentoring, tutoring and academic coaching, and a strong behavioral support specialist program
- Robust band program, PE, aerobic strength training, health and fine arts
- Experiential-exploration courses through project-based learning

School Improvement Goals:

Kennedy Middle School focuses on four areas to improve educational outcomes for all students: school attendance, student academic outcomes, community family outreach and communication, and school climate and culture.

To ensure every student is engaged, ready to learn and experiences success, Kennedy staff commits to:

- Having high academic expectations
- Providing equitable access to quality instruction
- Implementing relevant and timely student supports
- Building healthy and positive relationships
- Developing student voice and agency

Madison Middle School

875 Wilkes Drive, Eugene, OR 97404
541-790-4300 Fax: 541-790-4320
madison.4j.lane.edu

Principal: Peter Barsotti
Email: barsotti_p@4j.lane.edu

Grades: 6–8
Enrollment: 437

Feeder Elementaries: Awbrey Park and Spring Creek

High School Region: North Eugene

Mission Statement: Madison Middle School is a community of involved citizens that empowers all students to have an “I can” attitude and prepares them for success in an ever-changing world.

Program Description: At Madison Middle School, all students take language arts, social studies, math and science. Madison is a proficiency-based teaching and learning school. This means students are assessed using clear standards and learning targets with multiple opportunities and ways to demonstrate their understanding. Madison offers a wide range of enrichment opportunities. We are a strong AVID school.

School Highlights:

- Three years of required courses in math, science, language arts and social studies
- Yearlong electives offered include American Sign Language, band, theater and projects
- Trimester enrichment classes offered include AVID, PE, health, art, woods, music, cooking, STEM and intervention classes
- Academic support for all students: TAG student services, Learning Center and Regional Learning Center programs, tutoring, mentoring, homework help and reading support using Read Right and Read 180, and math support
- An advisory program called Focus meets four times a week for 25 minutes. Students develop social and emotional well-being and college and career readiness skills, and receive academic support and intervention
- Student support programs include WEB (8th graders mentoring 6th graders), PBIS (Positive Behavioral Interventions and Support), IPBiS (high-level behavioral, academic and attendance intervention for individual students and groups of students)

School Improvement Goals:

- Foster academic achievement
- Improve individual reading, math and writing scores
- Create supports to ensure student success
- Build school structures to promote a healthy school climate
- Promote social skill development and interpersonal skill development

Monroe Middle School

2800 Bailey Lane, Eugene, OR 97401

541-790-6300 Fax: 541-790-6305

monroe.4j.lane.edu

Principal: Sun Saeteurn

Grades: 6–8

Email: saeteurn_s@4j.lane.edu

Enrollment: 551

Feeder Elementaries: Holt, Willagillespie and Buena Vista

High School Region: Sheldon

Mission Statement: Together, we will prepare students for high school, college and career by providing each student with a high-quality education.

Program Description: Monroe Middle School is a professional learning community where academic achievement and success is valued by staff, students and parents. Monroe has a strong parent network that supports instruction and promotes a positive school climate. Monroe staff recognizes the unique needs of early adolescent students, and designs developmentally appropriate education aligned to the state standards and articulated to high school, college and career readiness.

School Highlights:

- Schoolwide Literacy: Instruction to prepare students for high school, college and career
- Advancement Via Individual Determination (AVID): Instructional strategies to develop college readiness in writing, inquiry, collaboration, organization, and reading (WICOR)
- Advisory Program: Focus on students' social emotional learning, AVID strategies, digital citizenship, school safety procedures, anti-bullying/harassment, and much more
- Site Council: Support the School Improvement Plan (SIP), generate fundraising and grant funds, and input related to instructional programming
- World Languages: French, Spanish Immersion program in grades 6–8
- Positive Behavior Interventions and Supports (PBIS): Schoolwide expectations, positive acknowledge systems, and campus climate and culture
- Math: enriched learning through advanced and high school placement opportunities
- iPads: 1-1 for every student, instructional technology in every classroom
- WEB Program (Where Everyone Belongs): 8th graders mentoring incoming 6th graders
- Mustang Intramurals: free monthly competitions for all students during lunch (4-square, basketball bump, volleyball, Mario Kart, dodgeball, badminton, and many more)
- Well-Rounded Electives: Spanish, French, performing arts, PE, team sports, technology and art; full-time specialists for PE, art and music
- Various club opportunities: GSA, NASU, BSU, Yearbook, etc.

School Improvement Goals:

- Student Achievement: A commitment to high academic standards; meet the needs of all students and close the achievement gap; reinforce reading, writing, math and study skills for high school readiness and beyond
- School Climate: Provide consistent schoolwide policies and procedures that teach and promote safe, respectful and responsible behavior; provide guidance activities to enhance growth and development
- School Equity: Provide social and physical activities that are appropriate for middle school students; teach cooperation, participation and respect for individual differences

Roosevelt Middle School

500 East 24th Avenue, Eugene, OR 97405
541-790-8500 Fax: 541-790-8505

roosevelt.4j.lane.edu

Principal: Courtney Leonard
Email: leonard@4j.lane.edu

Grades: 6–8
Enrollment: 575

Feeder Elementaries: Adams, Camas Ridge, Edison and Charlemagne

High School Region: South Eugene

Program Description: Roosevelt balances academic excellence with a robust elective program and a focus on social and emotional growth. Our CORE (Creating Our Roosevelt Environment) program trains 8th grade student leaders to support all 6th grade students at Roosevelt. Our Advisory program, called “House,” emphasizes community and connection across all grades. House offers student support for social and emotional growth, as well as a place to develop academic skills and habits. Our comprehensive counseling and special education services offer a wide range of support to all students.

School Highlights:

- RMS offers a state-of-the-art facility, which opened in 2016.
- House is a critical component of the RMS program. Each teacher advises approximately 25 students in a blended-grade environment in academic skills and habits, social-emotional growth and identity development.
- Students have access to electives in the performing arts (music, art, theater), as well as Spanish, robotics, movie production, student government and AVID (Advancement Via Individual Determination).
- Roosevelt is home to the middle-level French Immersion program. Fifth graders move to Roosevelt from Charlemagne Elementary School, and go on to Eugene International High School (Eugene IHS) at South Eugene High School.

School Improvement Goals:

- Assist and support students to meet or exceed academic standards in math, language arts, social studies, science and across the curriculum
- Provide students with a wide range of intellectual experiences; increase student exploration and engagement within the Roosevelt curriculum
- Build authentic relationships throughout the Roosevelt community; give students guidance and a valued voice
- Value students’ personal experiences and their heritage; integrate social and equitable experiences within the curriculum
- Teach our students the skills they need to be respectful, informed, participatory members of our school community, so that they can be respectful, informed, participatory members of our larger community

Spencer Butte Middle School

500 East 43rd Avenue, Eugene, OR 97405

541-790-8300 Fax: 541-790-8305

roosevelt.4j.lane.edu

Principal: Peter Tromba

Grades: 6–8

Email: tromba_p@4j.lane.edu

Enrollment: 377

Feeder Elementaries: Adams, Camas Ridge and Edgewood

High School Region: South Eugene

Mission Statement: A partnership of students, parents and staff committed to creating an environment where students become lifelong learners.

Program Description: The core values that support our program are: (1) cultural and environmental sustainability; (2) a growth mindset, which states that effort leads to excellence; and (3) dignity for everyone in our school community. Our school culture fosters respect and achievement, encouraging students to flourish during these challenging middle years. Our dedicated staff accommodates individual student needs to reach their full potential through a combination of integrated hands-on projects, involvement in a comprehensive arts program and academic skills instruction.

School Highlights:

- A student-centered, safe, healthy and intimate school climate, featuring a harassment- and racism-free zone that instills respect for diversity
- Challenging and well-articulated academic programs, featuring many hands-on projects and field studies that prepare students for the transition to high school
- Strong commitment to fine arts and music, as well as other elective offerings
- Broad range of elective opportunities including band, Spanish, art, community service, yearbook, game design, AVID, maker space, mindfulness, and outdoor survival
- Extracurricular activities including jazz band, track and field, Lego robotics and student-generated clubs

School Improvement Goals:

- Create high-level academic experiences that are aligned with standards and help all students to be on track for high school and beyond
- Maximize student voice in the development of the school program
- Engage students to promote high attendance

Alternative Middle School Programs

At the middle school level, alternative school students take courses with the at-large population of the host middle school along with classes in their specialized alternative program. Enrollment and state test results are counted with those of the host middle school. For more information, contact the school office.

Chinese Immersion Middle Level *a program of Kennedy Middle School*



2200 Bailey Hill Road, Eugene, OR 97405
541-790-5575 Fax: 541-790-5505

Principal: Morgan Christensen **Grades:** 6 in 2022–23 (adding a grade each year)
Email: christen_mo@4j.lane.edu

Chinese Immersion Elementary School: Chinese Immersion

Chinese Immersion High School: Eugene IHS at Churchill

Program Description: The Chinese immersion program at Kennedy is a “school within a school.” Most of the students in the program have attended Chinese Immersion Elementary School. Students entering the middle school program who did not attend Chinese Immersion School must demonstrate an appropriate command of the language.

Kennedy’s immersion program requires students to study in Chinese for a third of their school day. For other classes, they join other Kennedy students for classes taught in English. All students take two year-long classes in Chinese: language arts and social studies. Students can also opt in into a Chinese language elective.

French Immersion Middle Level *a program of Roosevelt Middle School*



500 East 24th Avenue, Eugene, OR 97405
541-790-8500 Fax: 541-790-8505

Principal: Courtney Leonard **Grades:** 6–8
Email: leonard@4j.lane.edu

French Immersion Elementary School: Charlemagne

French Immersion High School: Eugene IHS at South Eugene

Program Description: The French immersion program at Roosevelt is a “school within a school.” Most students in the program attended Charlemagne French Immersion Elementary School. Students entering the middle school program who did not attend Charlemagne must demonstrate an appropriate command of the language.

Roosevelt’s immersion program requires students to study in French for a third of their school day. For other classes, they join other Roosevelt students for classes taught in English. All students take two year-long classes in French: language arts and social studies. Students can also opt in into a French conversation elective.

Japanese Immersion Middle Level

a program of Kelly Middle School



850 Howard Avenue, Eugene, OR 97404
541-790-4740 Fax: 541-790-4746

Principal: John Wayland
Email: wayland_j@4j.lane.edu

Grades: 6–8

Japanese Immersion Elementary School: Yujin Gakuen

Japanese Immersion High School: North Eugene

Program Description: The Japanese immersion program at Kelly is a “school within a school.” The integrated program for Yujin Gakuen elementary students, and students with advanced Japanese ability, helps prepare them for International Baccalaureate (IB) programs or advanced language courses in high school and/or college. Emphasis is placed on cooperation, good citizenship and self-discipline.

At the middle school level, students work to move beyond passive listening skills to develop strong oral communication and writing skills, including continued Kanji study. Students study entirely in Japanese for half of their day. For the other half, immersion students join English language science, math and an elective course.

Dual immersion is a unique opportunity for Japanese and English speakers to work together to become bilingual and biliterate. It also paves the way to learn other languages in high school and beyond. Students learn to appreciate and understand differences in cultures and traditions across languages. The advantages to being a global citizen who understands many cultures and languages is a benefit to any post-high school pathway.

Spanish Immersion Middle Level

a program of Monroe Middle School



2800 Bailey Hill Lane, Eugene, OR 97401
541-790-6300 Fax: 541-790-6305

Principal: Sun Saeteurn
Email: saeteurn_s@4j.lane.edu

Grades: 6–8

Spanish Immersion Elementary School: Buena Vista

Spanish Immersion High School: Eugene IHS at Sheldon

Program Description: The Dual Language Spanish Immersion program at Monroe is a “program within a school.” Most students in the program attended Buena Vista Elementary School. Students entering the middle school program who did not attend Buena Vista must demonstrate an appropriate command of the language by testing with the immersion department. Immersion students receive approximately:

- 6th grade: 30% of the day in Spanish through language arts and social studies.
- 7th and 8th grade: One trimester is 50% of the day and two trimesters are 30% of the day in Spanish through language arts, social studies and one elective class (Discover).

Monroe’s rigorous dual language immersion program prepares students for further study at Sheldon’s International High School program. The aim is to achieve the International Baccalaureate and/or reach levels of Spanish advanced enough to earn college credit.

Spanish Dual Immersion Middle Level

a program of Kelly Middle School

850 Howard Avenue, Eugene, OR 97404
541-790-4740 Fax: 541-790-4746

Principal: John Wayland
Email: wayland_j@4j.lane.edu

Grades: 6–8

Spanish Dual Immersion Elementary School: El Camino del Río

Spanish Dual Immersion High School: North Eugene

Program Description: The Spanish dual immersion program at Kelly is as a “school within a school.” Students enroll in language arts, social studies and an elective taught in Spanish.

Kelly’s Spanish dual immersion program provides students with half of their day entirely in Spanish. For the other half, immersion students join English language science, math and an elective course.

Dual immersion offers a unique opportunity for native Spanish and English speakers to work together to become bilingual, biliterate and bicultural. It also paves the way to learn additional languages in high school and beyond. Students of all backgrounds learn to appreciate and understand differences in cultures and traditions.

Students who are bilingual, biliterate and bicultural experience increased opportunities in the workplace. The advantages to being a global citizen who understands many cultures and languages is a benefit in any post high school student pathway. A dual immersion educational pathway is excellent preparation to enter International Baccalaureate (IB) programs or advanced language courses in high school or college. College credit can even be earned through Advanced Placement language exams in high school.

Notes

High Schools

a Denotes an alternative school

Churchill High School

1850 Bailey Hill Road, Eugene, OR 97405
541-790-5100 Fax: 541-790-5110
chs.4j.lane.edu

Principal: Greg Borgerding Ed.D
Email: borgerding_g@4j.lane.edu

Grades: 9–12
2019–20 Enrollment: 1,140

Feeder Middle Schools: Arts & Technology Academy, Kennedy

Mission Statement: Churchill High School will build a community of excellence by cultivating an environment of equity; fostering a diverse culture of lifelong learners; recognizing the individual strengths of each student; expanding knowledge; and developing skills through multiple pathways and programs. We welcome, respect, and honor people of all races, all religions, all countries of origin, all sexual orientations, all genders, all abilities. Our diversity is our strength and we are united in our Lancer Pride.

Program Description: One of the hallmarks of CHS is the caring culture of staff and students. We hold a collective commitment to respecting each and every student as one of our own. We further believe that every student has innate talents whether they have been discovered or not; we want for each student to find a successful path after high school.

We have six very successful career technical education programs of study that provide our students an opportunity to build experience in industry, take college-level classes, and explore their passions and interests. Along with these pathways, CHS has a strong college-bound culture, with Advanced Placement and International Baccalaureate classes, plus supports for students to be successful in these classes. Service is another hallmark of Churchill. Our students give over 15,000 hours of volunteer service each year, making a difference in the lives of people throughout the community.

School Highlights:

- A balanced program with a wide range of opportunities for our diverse student body
- AVID (Advancement Via Individual Determination) elective classes available at each grade level, providing instruction in college success behaviors, as well as support for students to maintain college-acceptance GPAs
- Six career technical education (CTE) programs of study for students to choose a pathway of interest and high academics: Health Services, Rachel Carson Environmental Studies, Graphic Design, West End Performing Arts, West End Digital Media Production, and Engineering
- Advanced opportunities provided through AP courses for all students and IB courses for International High School students
- Strong elective programs with an extraordinary music and drama department, a college-level graphic design program and science electives such as robotics and marine biology
- Opportunities to earn over 60 college-level credits across a wide variety of content

School Improvement Goals:

CHS has several student growth goals that are typical at most schools. We believe that our promise to the community is to keep their children safe, make them feel special, and ensure high levels of learning. In order to ensure this promise we have activated three primary goals in our school: Positive and supportive relationships with each student, a steadfast focus on best instructional practices, and an ongoing commitment to improving our graduation rate thereby preparing our students for the exciting challenges of the future. We believe that the focus on these goals is essential to our overall growth, but most importantly the holistic development of our students.

For information about Eugene International High School at Churchill, please see page 47.

North Eugene High School

200 Silver Lane, Eugene, OR 97404
541-790-4500 Fax: 541-790-4440
nehs.4j.lane.edu

Principal: Trinity Welch-Radabaugh **Grades:** 9–12
Email: welch_t@4j.lane.edu **Enrollment:** 1,047

Feeder Middle Schools: Kelly and Madison

Mission Statement: At NEHS, all students feel seen, supported, and prepared for their next steps in life. By providing students with rigorous educational experiences and guided support, they have the foundation necessary to move beyond high school and be prepared for the pathway of their choosing.

Program Description: NEHS has a long and proud tradition in the River Road and Santa Clara communities. An outstanding and deeply caring staff believes in the potential of every student. The variety of exciting programs support success in high school & beyond.

Commitment to diversity is evidenced by staff leadership, which includes an equity committee, unity-themed assemblies, affinity groups such as Latino Student Union and Gender Sexuality Alliance, and curriculum such as Courageous Conversations—a class where students learn and practice the skills needed to accept and respect one another.

NEHS is an International Baccalaureate World School—every student has access to the IB diploma program and the career-related program. All students are able to pursue a rich and rigorous curriculum in every subject area. Our curriculum includes college preparatory courses across all content areas and a variety of fine, applied and performing arts, plus health and physical education classes. An involved and diverse student body means a multitude of clubs and a full range of 5A athletic programs.

School Highlights:

- Two International Baccalaureate (IB) programs: Diploma Program and Career-Related Program; all students have access to all IB courses and may earn college credit
- Dual LCC College Now credits in Spanish, science, math, wood shop, music, child development, digital media, health sciences, programming and software development
- Career technical education (CTE) programs: wood shop, metalworking, child development, culinary arts and digital media
- World languages: American Sign Language, Japanese and Spanish
- Language immersion programs: Japanese immersion and Spanish dual immersion
- Student supports: Targeted intervention classes, essential skills classes, ASPIRE volunteers and UO Honors College tutors
- College preparatory system with an AVID elective class at each grade level; AVID strategies such as Cornell Notes, Socratic Seminar and Interactive Notebooks utilized
- School climate: Diligent focus on maintaining the fidelity and impact of comprehensive Positive Behavior Intervention and Support and encouraging Highlander PRIDE (Perseverance, Respect, Integrity, Discipline and Excellence)

School Improvement Goals:

- Support Social & Emotional Learning: Embed SEL strategies into daily instructional practices to support students' mental well-being and build healthy relationships in class.
- Develop Inclusive Environment: Apply strategies to develop a sense of belonging for students, increase student success by working to dismantle and/or interrupt systematic racism, increase academic belonging so historically marginalized and underserved students can thrive.
- Improve Instruction: Effectively use district-identified high leverage instructional strategies to improve access to information, materials, and instruction in all classes resulting in increased achievement and preparedness at all grade levels.

Sheldon High School

2455 Willakenzie Road, Eugene, OR 97401

541-790-6600 Fax: 541-790-6605

shs.4j.lane.edu

Principal: Mike Ingman

Email: ingman_m@4j.lane.edu

Grades: 9–12

Enrollment: 1,515

Feeder Middle Schools: Monroe and Cal Young

Mission Statement: Sheldon High School is a place of respect, integrity and learning. Its mission is to provide all students with a challenging, comprehensive education designed to prepare them to perform as successful citizens in our complex, ever-changing world.

Program Description: Our statewide and nationally recognized world languages program offers exemplary opportunities in Spanish Immersion, and college credit and/or Advanced Placement courses in Spanish, Japanese and French.

Commitment to diversity is evidenced by staff leadership, which includes an equity committee, plus unity-themed assemblies, affinity groups (e.g. Black Student Union, Gender Sexuality Alliance, Latino Club, Jewish Students Club), a multicultural center, and curriculum such as Courageous Conversations class, which offers students an opportunity to learn and practice the skills needed to accept and respect one another.

School Highlights:

- Consistent performance above state and national averages on the SAT and ACT.
- Academic excellence anchored in rich and rigorous college preparatory Honors and International Studies programs; College Now, Advanced Placement and International Baccalaureate courses are offered in a variety of academic areas.
- Nationally recognized athletic programs successfully competing at the 6A level with 21 sports, providing outstanding development opportunities for young women and men.
- Over 60 exemplary co-curricular programs including student government, leadership, National Honor Society, drama, cheer, dance, as well as a variety of clubs and activities.
- Student advisory program that fosters relationships, monitors student academic progress, develops a four-year plan and profile, and addresses career-related learning standards.
- Outstanding programs including career technical education, computing and technology, art, drama, choir, marching band, jazz band, orchestra, health and physical education.
- Sheldon hosts the following specialized programs: Eugene International High School, Transition Education Network (TEN, formerly known as the Life Skills Network) and KRVM (the district's radio station).
- AVID program through which students become proficient in taking and interacting with their focus notes, learn to ask clarifying questions in academic classes, practice asking for help when needed, work on organizational skills, reflect on their learning and, most importantly, learn how to plan and manage their time to be successful in school.
- Award-winning counseling and career center. Approximately 90% of Sheldon graduates go on to post-high school programs.

School Improvement Goals:

Available for viewing on the Sheldon website: *shs.4j.lane.edu*

For information about Eugene International High School at Sheldon, please see page 47.

South Eugene High School

400 East 19th Avenue, Eugene, OR 97401
541-790-8000 Fax: 541-790-8005
sehs.4j.lane.edu

Principal: Carey Killen

Grades: 9–12

Email: killen_c@4j.lane.edu

Enrollment: 1,522

Feeder Middle Schools: Roosevelt and Spencer Butte

Mission Statement: South Eugene High School is a caring community that encourages students to be lifelong learners and contributors to an increasingly complex world.

Program Description: South Eugene is a well-established and highly regarded high school. Students and staff take great pride in the number of exceptional opportunities available at our open-campus school. Our rigorous curriculum includes college preparatory courses across all content areas, rigorous science and math courses, vibrant literature offerings, relevant experiences in the social sciences, and a variety of fine, applied and performing arts, in addition to health and physical education classes. Our campus is located near the University of Oregon and Lane Community College, which provide easy access to additional advanced academic opportunities. SEHS students also participate in a multitude of clubs and a full athletic program.

School Highlights:

- Our reputation for academic excellence includes a great variety of Advanced Placement courses in math, science, English, social studies and world languages for which SEHS is recognized statewide and nationally
- Outstanding performing, applied and fine arts programs—students interested in music and theater thrive at South, as do those interested in fine arts; Career Technical Education courses offered include Culinary Arts, Advanced Computer Science, Journalism, Early Childhood Education, as well as Autonomous Aerial Systems (drones)
- Advancement Via Individual Determination (AVID): This college preparatory system includes an AVID elective class at each grade level, and AVID strategies such as Focused Notetaking, Socratic Seminar and Interactive Notebooks are utilized in classrooms throughout the school
- Award-winning counseling and career center: Approximately 90% of SEHS graduates go on to either four-year universities or two-year colleges
- SAT, ACT and state test scores well above state and national averages have resulted in SEHS being one of few comprehensive high schools to consistently receive the highest ratings among high schools in Oregon
- Successful athletics program, plus a robust student-club program of approximately 40 interest-based groups ranging from sports to chess to dance to multicultural issues to robotics, and more

School Improvement Goals:

- To have a more inclusive academic, extracurricular and co-curricular program representative of the diverse student body we serve
- To be a more cohesive institution where every student is known and cared for
- To have a robust freshman transition and student retention program for all SEHS students and families

For more information about our school improvement goals, please visit our website.

For information about Eugene International High School at South, please see page 47.



At Churchill: 1850 Bailey Hill Road, Eugene, OR 97405 • 541-790-5225 • Fax: 541-790-5110
At Sheldon: 2455 Willakenzie Road, Eugene, OR 97401 • 541-790-6636 • Fax: 541-790-6605
At South: 400 East 19th Ave., Eugene, OR 97401 • 541-790-8030 • Fax: 541-790-8005
ihs.4j.lane.edu

Principal: See host school
Head Teacher: Brian Kuzma
Email: kuzma_b@4j.lane.edu

Grades: 9–12
Enrollment: 229 at Churchill,
377 at Sheldon, 440 at South Eugene

Mission Statement: As global citizens at Eugene International High School, we aspire to value diversity, ambiguity and discovery, and to act with responsibility, integrity and compassion.

Program Description: Established in 1984, Eugene International High School (Eugene IHS) is an award-winning alternative school in international studies. The school is designed for students who value global understanding and communication, cultural differences and improving the human condition. Eugene IHS offers a four-year interdisciplinary humanities curriculum focused on the study of nations, their cultures, history, artistic expression, and political, economic and belief systems. Students who graduate from Eugene IHS will have developed a cultural awareness necessary for international communication and understanding and will receive an honorary Eugene IHS diploma in addition to an official high school diploma. Eugene IHS is a school-within-a-school model located on the campuses of South Eugene, Sheldon and Churchill high schools. Eugene IHS offers students a core curriculum in international studies in the areas of language arts, social studies and health during half their school day. During the other half, students can select from an array of courses offered in the host schools, including the sciences, mathematics, world languages, physical education and electives.

School Highlights:

- An integrated curriculum: Vertical and horizontal articulation (example: geography class studying Japan when literature class reads *The Samurai's Garden* by Gail Tsukiyama).
- A global-minded perspective: Over the course of four years, students study aspects of nations around the globe. We create powerful learning opportunities and make relevant connections to students' lives. We promote local and global community involvement.
- Year-long classes: Year-long class structure strengthens the sense of community. Students build meaningful relationships and lifelong friendships. Support for ALL students.
- Established rigor: A member of the International Baccalaureate Program (IB), a worldwide affiliation of schools that promotes international standards of achievement. Students may pursue the full IB diploma with examinations in six subject areas or test in individual subjects. Students gain skills for successful post-secondary experiences. SAT, ACT and state test scores are well above state and national averages.
- Proficiency in a world language: All students must complete the equivalent of three years of world language study in order to receive the honorary Eugene IHS diploma. Students with advanced skills in Spanish or French may participate in immersion study.

School Improvement Goals:

- Promote our mission and goals as an international school
- Continue to cultivate our sense of community, identity and responsibility as Eugene International High School and as an alternative school
- Foster academic excellence for all students as measured by the IB curriculum
- Prepare our students to become successful global citizens of the 21st century
- Support and promote continuing efforts by staff to expand and improve teaching skills and strategies

Alternative High School Programs

Early College & Career Options (ECCO) and ECCO GED

200 North Monroe Street, Eugene, OR 97402
541-790-6850 Fax: 541-790-6855
ecco.4j.lane.edu

Administrator: Paula Nolan
Email: nolan_p@4j.lane.edu

Grades: 10–12

Mission Statement: To provide an equitable educational opportunity so that all students in Eugene 4J leave high school with the skills to be successful in their choice of career and/or college.

Program Description: Early College & Career Options (ECCO) is an alternative high school offering a state-accredited diploma through credit recovery opportunities. Our academic programs stress equity, community and self-advocacy using trauma informed teaching practices. Smaller class sizes offer students more personalized instruction.

4J's GED program, housed in the Lane Community College Downtown Center, provides another option for student success. Staff provide instructional support and study materials needed to earn a GED. Testing takes place off-site and at flexible times during the day.

How to Enroll: If you are interested in an alternative education placement, talk to your high school counselor or administrator. Both ECCO and GED are referral-based programs. If you are not currently enrolled in a 4J school, please contact the high school closest to your residence or ECCO High School for assistance.

Transition Education Network (TEN)

2455 Willakenzie Road, Eugene, OR 97401
541-790-6633 Fax: 541-790-6605
4j.lane.edu/lifeskillsnetwork

Principal: Mike Ingman
Email: ingman_m@4j.lane.edu

Grades: 9–12

Program Description: TEN, located at Sheldon High School, is a creative 21st century program that provides appropriate instruction and opportunities for students aged 14–21 with developmental disabilities and who have educational needs that include a high level of staff support and a focus on functional skills. The program is a national model and maximizes students' potential in educational, social, vocational, recreational and residential areas. TEN has classrooms at Sheldon, at a number of local businesses, and at an apartment complex so that students may learn vocational and community living skills. Contact TEN for enrollment information.

Online Academy

Eugene Online Academy



200 North Monroe Street, Eugene, OR 97402
541-790-6850 Fax: 541-790-6855
4j.lane.edu/schools/eugeneonline

Administrator: Paula Nolan
Email: nolan_p@4j.lane.edu

Grades: K–12

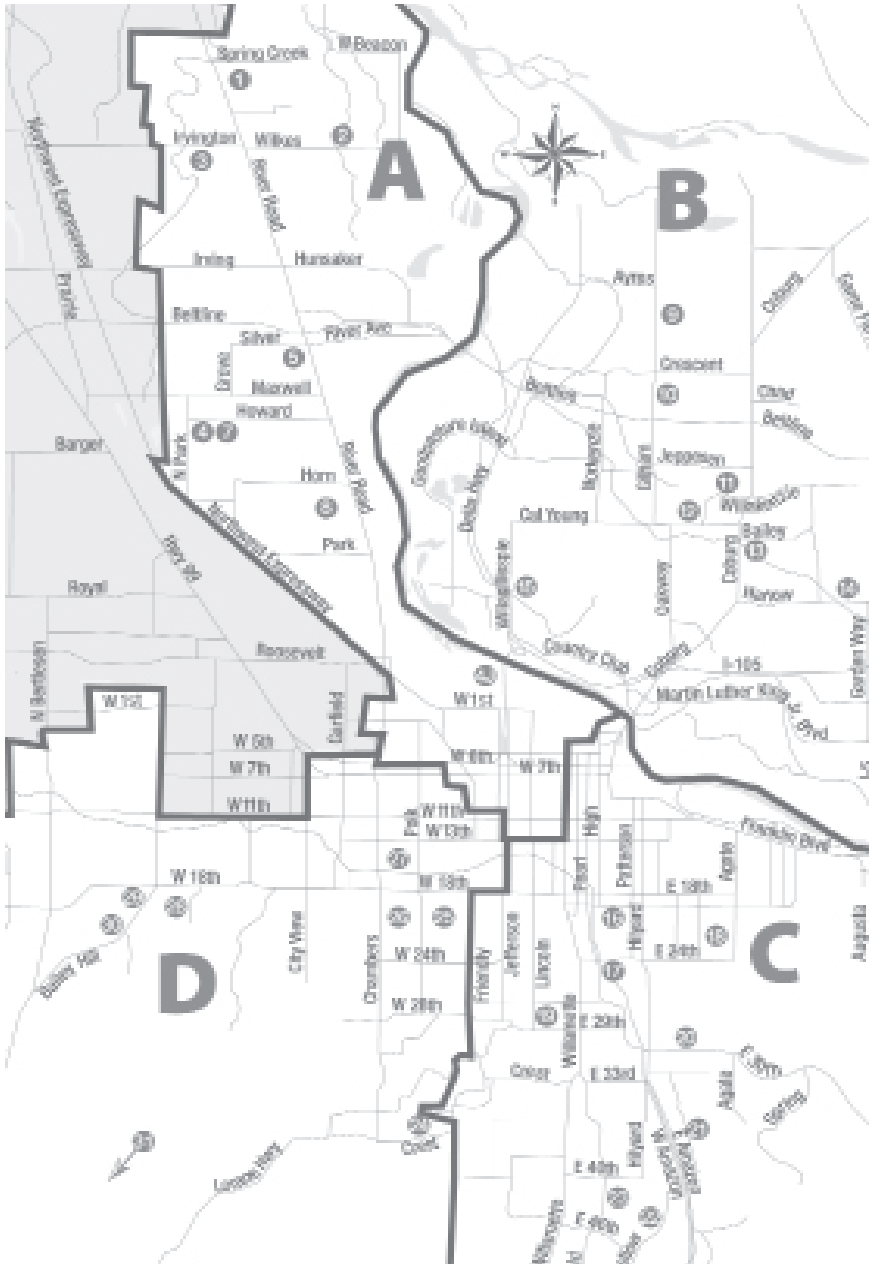
Mission Statement: To provide students with a high-quality, well-rounded educational experience that is rigorous, culturally responsive, personalized and engaging.

Program Description: Eugene Online Academy is an online K–12 learning program offered by Eugene School District 4J that combines technology and in-person support for students interested in learning in a different way than a traditional classroom setting. Students complete online coursework off-campus in an asynchronous manner and may seek additional support from 4J teachers and staff either by phone, video meeting, or in person at the Eugene Online Academy workspace.

For the most updated information on Eugene Online Academy offerings and curriculum information, please visit 4j.lane.edu/schools/eugeneonline.

How to Enroll: Eugene Online Academy requires co-enrollment at a 4J school. If you are interested in Eugene Online Academy, please contact the brick-and-mortar school your student would be enrolled. If you are not currently attending a 4J school, please contact the Eugene Online Academy for assistance.

Eugene School District 4J Map



Map Index

1. Awbrey Park Elementary, p. 11
 2. Madison Middle, p. 35
 3. Spring Creek Elementary, p. 25
 4. Yujin Gakuen Japanese Immersion Elementary, p. 28
 4. Kelly Middle/Japanese Immersion Middle/Spanish Dual Immersion Middle, p. 33, 39, 40
 5. North Eugene High, p. 44
 7. Howard Elementary, p. 22
 8. River Road/El Camino del Río Elementary, p. 24
 9. Gilham Elementary, p. 20
 10. Cal Young Middle, p. 32
 11. Sheldon High/International High/TEN, p. 45, 47, 48
 12. Buena Vista Spanish Immersion Elementary, p. 12
 13. Monroe Middle/Spanish Immersion Middle, p. 36, 40
 14. Holt Elementary, p. 21
 15. Willagillespie Elementary, p. 27
 16. South Eugene High/International High, p. 46, 47
 17. Roosevelt Middle/French Immersion Middle, p. 37, 39
 18. Edison Elementary (starting fall 2022), p. 19
 19. Edison Elementary (temporary location until fall 2022), p. 19
 19. Camas Ridge Community Elementary (temporary location 2022–24), p. 13
 20. Camas Ridge Community Elementary (moves to temporary location in fall 2022), p. 13
 21. Charlemagne French Immersion Elementary, p. 14
 22. Edgewood Community Elementary, p. 17
 23. Spencer Butte Middle, p. 38
 24. Family School, p. 19
 25. Adams Elementary, p. 10
 26. Arts & Technology Academy, p. 31
 27. Chávez Elementary, p. 15
 28. McCornack Elementary, p. 23
 29. Churchill High/International High, p. 43, 47
 30. Kennedy Middle, p. 34
 - 30 Chinese Immersion Elementary, p. 16
 31. Twin Oaks Elementary, p. 26
 - 4J. Early College & Career Options (ECCO), p. 48
 - 4J. Eugene Online Academy, p. 49
- 4J. 4J Education Center, 200 North Monroe Street, 541-790-7700

Schools Index

Adams Elementary.....	10	Japanese Immersion Elementary	28
Alternative High School Education Options	48	Japanese Immersion Middle.....	39
Arts & Technology Academy	31	Kelly Middle	33
Awbrey Park Elementary	11	Kennedy Middle.....	34
Buena Vista Elementary	12	Language Immersion.....	12, 14, 16, 24, 28, 39, 40
Cal Young Middle.....	32	Madison Middle	35
Camas Ridge Community Elementary.....	13	McCornack Elementary.....	23
Charlemagne French Immersion	14	Monroe Middle	36
Chávez Elementary.....	15	North Eugene High	44
Chinese Language Immersion Elementary	16	Online Academy.....	49
Chinese Immersion Middle	39	River Road/El Camino del Río Elementary.....	24
Churchill High	43	Roosevelt Middle	37
Churchill International High (IHS).....	47	Sheldon High.....	45
Edgewood Community Elementary.....	17	Sheldon International High (IHS).....	47
Edison Elementary	18	South Eugene High.....	46
El Camino del Río/River Road Elementary	24	South Eugene International High (IHS).....	47
ECCO.....	48	Spanish Immersion Elementary...	12, 24
Eugene International High	47	Spanish Immersion Middle	40
Eugene Online Academy.....	49	Spencer Butte Middle.....	38
Family School.....	19	Spring Creek Elementary.....	25
French Immersion Elementary	14	Transition Education Network (TEN).	48
French Immersion Middle.....	39	Twin Oaks Elementary	26
Gilham Elementary.....	20	Willagillespie Elementary	27
Holt Elementary.....	21	Yujin Gakuen Elementary	28
Howard Elementary	22		
International High School (IHS).....	47		



Eugene
School
District 4J

200 N. Monroe St., Eugene, OR 97402

541-790-7700 • www.4j.lane.edu